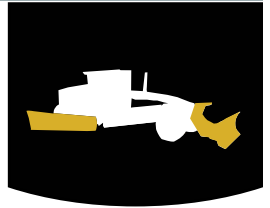


MG-0600 Series

Hydraulic Reversible Plow



The result of over 60 years of design improvements this reversible is the industry leader in snow equipment for Graders to this day. The full floating frame follows the contour of the road both laterally and horizontally to ensure maximum contact.

- Trip moldboard standard, optional trip edge available.
- Replaceable wear shoes and cutting edge for long wear-life
- Can be ordered in either Craig Quick Hitch or Push Pole Hook Up
- Angles 45° to the left and right
- Available in various widths
- Rugged 4" cylinders

CRAIG

QUALITY WE STAND BEHIND

Attachments • Built Right • Fit Right

HEAD OFFICE

96 McLean Avenue
Hartland, NB
E7P 2K5

ph: (506) 375-4493
fx: (506) 375-4848

CAMBRIDGE BRANCH

315 Thompson Drive
Cambridge, ON
N1T 2B3

ph: (519) 623-9500
fx: (519) 623-9511

1-800-565-5007

www.craigattachments.com