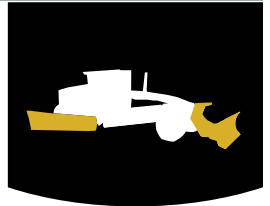


MG-300

# 300 Postless Wing Assembly



The 300 Series Postless Wing Assembly has been designed for maximum operator visibility and safety. Using a parallel arm design the front lift provides from 26" to 30" of level benching height and is available in three pitch adjustment configurations. Non-adjustable, manually adjustable and hydraulic adjustable pitch control options fit your specifications and your budget.

Existing Craig Wing Assemblies can easily be converted to a 300 series design by replacing the front post

- Available with 12', 13' or 14' moldboard
- Hydraulic Push Pole adds up to 34" (standard) of increased reach
- Mechanical floating front slide allows constant road contact
- Excellent operator visibility
- Provides excellent flow from grader moldboard
- Fully hydraulic design (no cables)

#### RECOMMENDED HYDRAULIC CYLINDER FLOW RATES

REAR EXTEND (WORK PORT RELIEF @ 1100PSI /ANTI-CAVITATION RECOMMENDED) 8-15 GPM (30-57L/MIN)

FRONT LIFT MINIMUM OF 5 GPM (19L/MIN)

REAR LIFT (FLOAT REQUIRED) 20 GPM (76L/MIN)

HYDRAULIC PITCH ADJUST (IF EQUIPPED) MINIMUM OF 5 GPM (19L/MIN)

# CRAIG

QUALITY WE STAND BEHIND

Attachments • Built Right • Fit Right

#### HEAD OFFICE

96 McLean Avenue  
Hartland, NB  
E7P 2K5

ph: (506) 375-4493  
fx: (506) 375-4848

#### CAMBRIDGE BRANCH

315 Thompson Drive  
Cambridge, ON  
N1T 2B3

ph: (519) 623-9500  
fx: (519) 623-9511

1-800-565-5007

[www.craigattachments.com](http://www.craigattachments.com)



## 300-12RM, 301-12RM & 302-12RM Series Wing Assembly Options and Hydraulic Requirements

---

### Wing Assembly Options

Extra-long 13'6" Moldboard (13" cutting edge)

- Reversible Carbide Cutting Edge
- Trip Edge
- Hydraulic Trip Swivel (N/A on 300)
- Hydraulic Quick Disconnects
- Heavy-Duty Long Reach Push Pole
- Curb Shoes
- Wing Moldboard Wear Shoes
- Rear-Post can be custom engineered to work with rear mounted attachments (ripper, rock rake, etc)

### 300-12RM Recommended Hydraulic Cylinder Flow Rates

- Rear Extend (work port relief @ 1100psi /anti-cavitation recommended) 8-15gpm (30-57L/min)
- Front Lift minimum of 5gpm (19L/min)
- Hydraulic pitch control (if equipped) minimum of 5gpm (19L/min)
- Rear lift (float required) 20gpm (76L/min)
- Hydraulic trip swivel (if equipped) minimum of 5gpm (19L/min)

### 301-12RM Recommended Hydraulic Cylinder Flow Rates

- Rear Extend (work port relief @ 1100psi /anti-cavitation recommended) 8-15gpm (30-57L/min)
- Front post minimum of 5gpm (19L/min)
- Rear lift (float required) 20gpm (76L/min)
- Hydraulic trip swivel (if equipped) minimum of 5gpm (19L/min)

### 302-12RM Recommended Hydraulic Cylinder Flow Rates

- Rear Extend (work port relief @ 1100psi /anti-cavitation recommended) 8-15gpm (30-57L/min)
- Front post minimum of 5gpm (19L/min)
- Rear lift (float required) 20gpm (76L/min)
- Rear post minimum of 8-15gpm (30-57L/min)
- Hydraulic trip swivel (if equipped) minimum of 5gpm (19L/min)

Craig Manufacturing Ltd. warrants to the original purchaser all products manufactured by CRAIG to be free from defects in material and workmanship for a period of (12) months starting from the date of delivery from factory unless otherwise specified.

