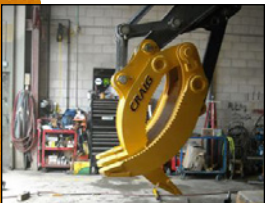
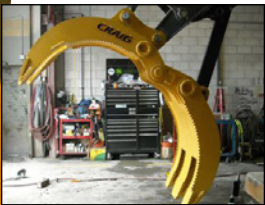
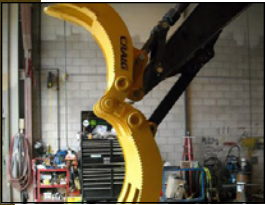


EX-CG CONTRACTOR GRAPPLE



Ideal for the multi-tool excavator. The Craig Contractor Grapple has been developed to offer the versatility of a grapple to excavator operators running a coupler or a pin grabber. The claws pivot on an independent pin allowing for a full range of motion. Solid boxed construction makes this grapple a great addition to your toolbox.

- Available in 2-over-3, 3-over-4 and 4-over-5 configurations
- Three hole bracket mounts strut to stick for variable grapple openings
- Available in Wedge Lock, Pin-on, S Series or Manual Bar Lock lugging
- Optional hydraulic cylinder to replace strut available
- Optional wear plates and hardfacing available
- Pin-on hook-ups are align bored to OEM tolerances
- Heavy duty shared-pin option available. Offers more clamping power for dedicated demolition machines



Hartland Office
 96 McLean Avenue
 Hartland, NB
 E7P 2K5 Canada

Ph: (506) 375-4493

Cambridge Office
 315 Thompson Drive
 Cambridge, ON
 N1T 2B3 Canada

Ph: (519) 623-9500

Blackfalds Office
 88 27323 TWP Rd. 394
 Lacombe County, AB
 T4M 0S1 Canada

Ph: (403) 356-0048

Lawrenceburg Office
 408 Commerce Way
 Ethridge, TN
 38456 USA

Ph: 1 (800) 867-1006

