

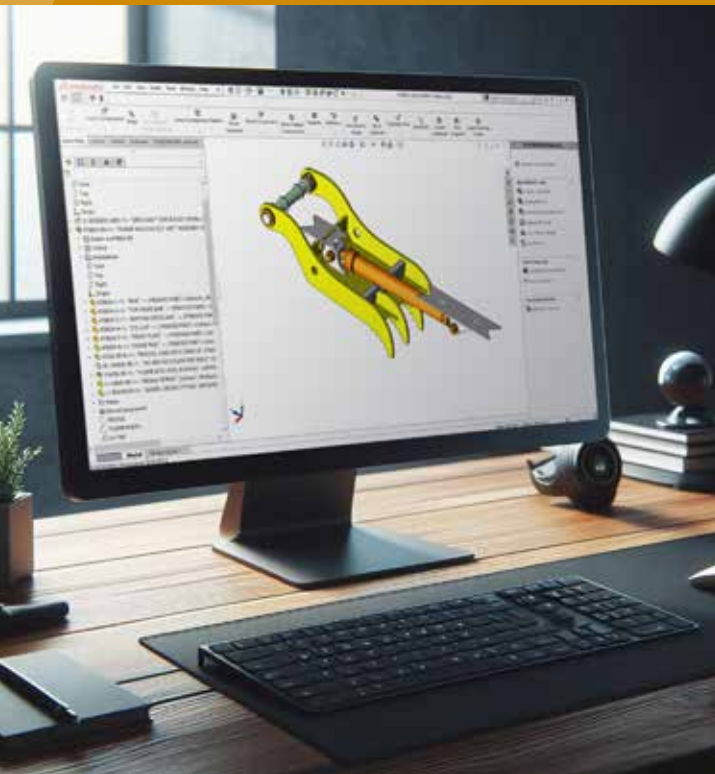
OUR MISSION

CUSTOMERS

Craig is dedicated to providing the highest quality products and support to allow our customers to unlock the maximum potential productivity of their equipment.

TEAM MEMBERS

We are committed to providing our Team Members with a stable, 5S and safe working environment that encourages personal and team development. Team creativity and innovation are the cornerstones on which our company has been built and only through these achievements will it succeed.



EX-CCT CRAIG CUSTOM THUMB

Still uncertain about the best thumb for your application and machine? Contact the Craig Customer Support Center today to inquire about the Craig Custom Thumb program offering. We can custom build a thumb to meet your exact specifications!

- Custom engineered to meet the exact specifications and requirements of your application
- Approval drawings provided for final sign off



EXCAVATOR

THUMB APPLICATION GUIDE

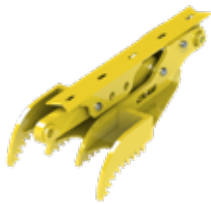


The stick and pad mount offering of thumbs from Craig Manufacturing offer the best value when you need a no non-sense easy to install thumb for your excavator. These thumbs offer no customization options and may not mesh with bucket teeth or meet the tip radius of the bucket.

STICK/PAD MOUNT STYLE

EX-SMMT

STICK MOUNT MECHANICAL THUMB



The Craig Stick Mount Mechanical Thumb is an ideal solution when an additional valve may not be available on your machine. A durable and easily installed thumb, the Craig Stick Mount Mechanical Thumb features a strut with three hole locations rather than a hydraulic cylinder.

- Up to 120 degrees of rotation
- Middle tines are shortened to help prevent interference with excavator boom
- Includes manual thumb lock to store thumb tight to the stick
- No hydraulics required to operate

EX-SMHT

STICK MOUNT HYDRAULIC THUMB

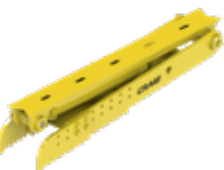


The Craig Stick Mount Hydraulic Thumb is the perfect solution for outfitting machines with a durable and easily installed thumb. When not in use the thumb tucks up close to the stick.

- Up to 120 degrees of rotation
- Middle tines are shortened to help prevent interference with excavator boom
- Includes manual thumb lock to store thumb tight to the stick
- Additional valve required on machine

EX-PMHUNIV

UNIVERSAL PAD MOUNT HYDRAULIC THUMB



The Craig Hydraulic Pad Mount Thumb is a universal stocking solution for outfitting machines with a durable, easily installed, fully hydraulic thumb that is field customizable to the specific tip radius of each machine. When not in use the thumb tucks up close to the stick for unparalleled visibility and convenience.

- Easy installation, hydraulic kits available
- Tucks close to the stick when not in use for great visibility
- Rubber stop and lock keep thumb tight to the stick when not in use
- Additional valve required on machine

ADVANTAGES:

- Universal design - works with a variety of machines
- Fast and easy installation

* Stick mount and pad mount thumbs are not customizable

* Stick mount and pad mount thumbs may not mesh with bucket teeth and/or bucket tip radius due to being designed to work with a range of machine categories and attachments

EXCAVATOR

THUMB APPLICATION GUIDE



Craig thumbs are custom designed to match customer specifications to suit the specific needs and design of their bucket. There is no "one size fits all" in this thumb design. Our custom engineering team works closely with you and our Customer Support Center to design a custom solution for your specific needs that meshes with your bucket and matches the tip radius.

DIRECT LINK STYLE

EX-CUT DIRECT LINK UTILITY THUMB



Our signature thumb, the Craig Direct Link Utility Thumb is designed to mesh with the teeth of your specified bucket. This thumb provides superior grip and dexterity for day-in and day-out material handling.

EX-CGT DIRECT LINK GRAB THUMB



The Craig Direct Link Grab Thumb is designed to match the tip radius of the bucket teeth. This design allows for precision grappling and placement of items. Features serrated tines for better grip of materials being handled.

EX-CWT DIRECT LINK WORKING THUMB

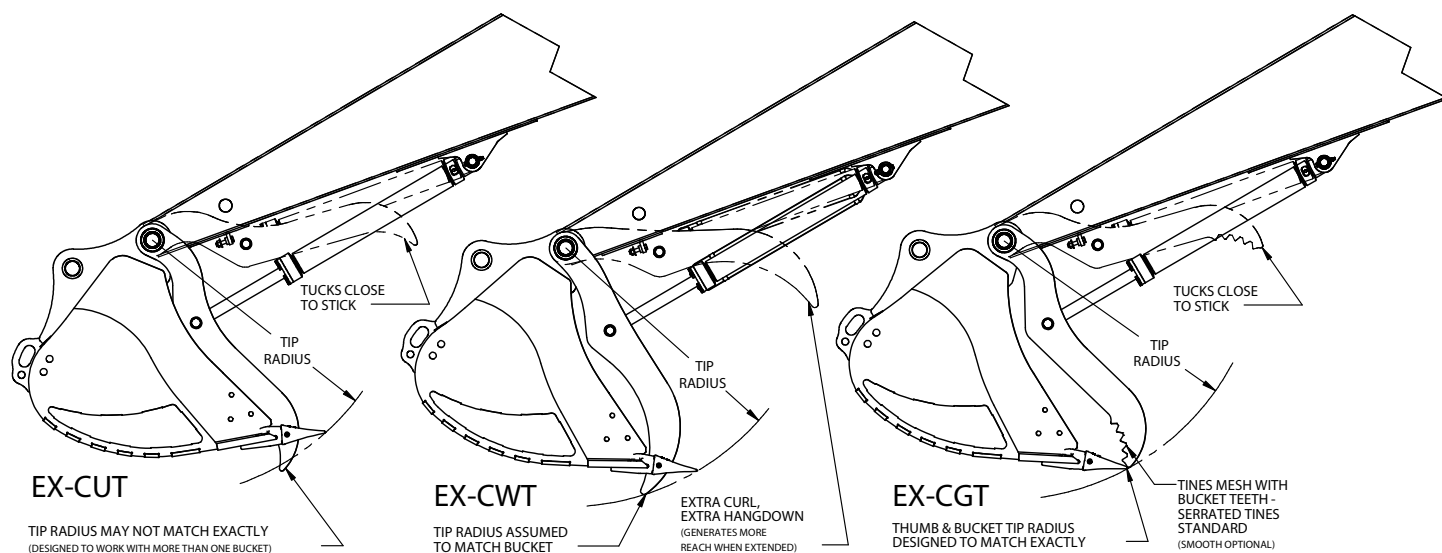


Optimized for increased reach, the Craig Working Thumb features an increased curvature profile which increases the thumb reach when fully extended. The greater curvature of the thumb also makes it easier to grapple larger objects.

ADVANTAGES:

- Designed to match your specified bucket
- Meshes with the teeth of the bucket

THUMBS PROFILE DESCRIPTIONS



EXCAVATOR

THUMB APPLICATION GUIDE



PROGRESSIVE LINK STYLE

EX-PLUT PROGRESSIVE LINK UTILITY THUMB



When you need the ultimate in maneuverability, look no further than the Craig Progressive Link Utility Thumb. Delivers up to 180 degrees (from the stick) of gripping power throughout virtually the entire rotation of the bucket.

EX-PLGT PROGRESSIVE LINK GRAB THUMB



Featuring up to 180 degrees (from the stick) of rotation, the Progressive Link Grab Thumb is designed to match the tip radius of the bucket teeth. Includes serrated tines for improved grip on the materials being handled.

EX-PLWT PROGRESSIVE LINK WORKING THUMB



With the curved thumb profile and up to 180 degrees (from the stick) of rotation, the Progressive Link Working Thumb is designed to grapple larger objects, maintain grip, and better suit the rotation of the bucket.

ADVANTAGES:

- Designed to match your specified bucket
- Meshes with the teeth of the bucket
- Progressive Link thumbs featured greater rotation range compared to Direct Link style thumbs

ROTATOR STYLE

EX-CRUT ROTATING UTILITY THUMB



Designed to provide up to 180 degrees (from the stick) of consistent clamping throughout the buckets rotation. The Rotating Utility Thumb features a short thumb pad design and easy installation - no aligning of idler pins required.

EX-CRGT ROTATING GRAB THUMB



With up to 180 degrees (from the stick) of rotation, the Rotating Grab Thumb can match the tip radius of the bucket teeth and maintain consistent clamping force. Features serrated tines to better improve material handling capability.

EX-CWT ROTATING WORKING THUMB



With up to 180 degrees (from the stick) of gripping rotation and an increased thumb tine curvature make the Rotating Working Style Thumb ideal for precise handling of material where additional bucket rotation is required. The greater curvature of the thumb makes it easier to grapple larger objects.

ADVANTAGES:

- Designed to match your specified bucket
- Meshes with the teeth of the bucket
- Same rotation as a conventional Progressive Link thumb
- Consistent gripping force in all positions
- No exposed cylinder to get damaged or scratched

EXCAVATOR

THUMB APPLICATION GUIDE



THUMBS

AVAILABLE OPTIONS

Cylinder Guards

- Standard on working thumbs
- Available as options on utility and grab thumbs

Two Tine Narrow Profile

- Available on Direct Link Utility Thumb only

Upgrade to Severe Service Thumb

- Upgrade to box section construction to reduce twisting from uneven loads and demolition applications
- AR 400 construction in high wear areas

Work with Non Craig Buckets and Couplers

- Customer supplied measurement sheets may be required

Serrated vs. Smooth Tines

- Smooth tines come standard on utility and working thumbs
- Serrated tines come standard on grab thumbs

Upgrade to Weld On AR400 Tine Tips

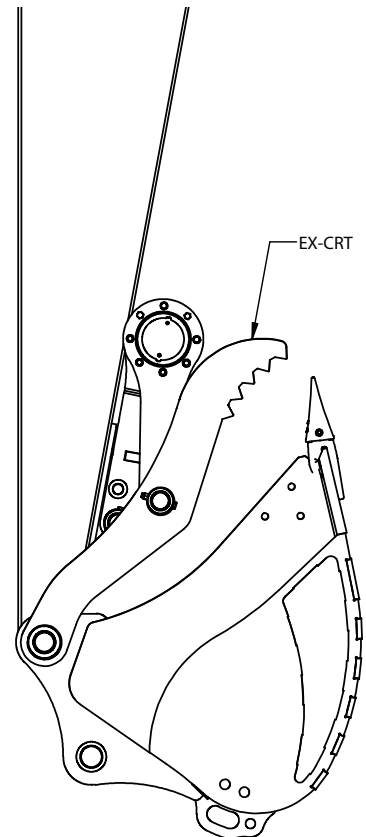
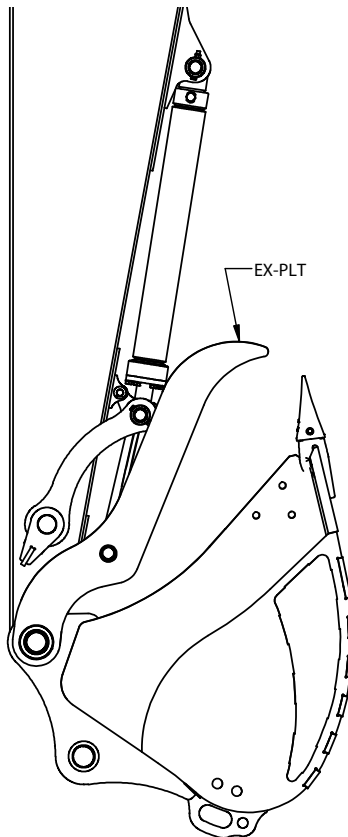
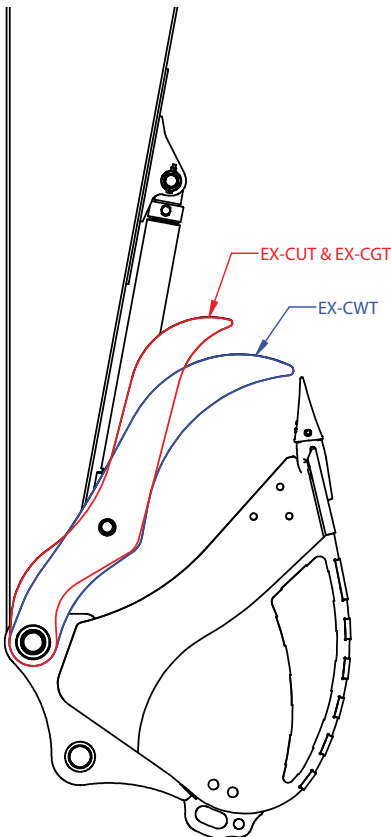
- Available on all thumbs

Progressive Link Linkage Options

- Progressive Link (PLT) - available for wedge style and pin-on style
- Progressive Link 2 (PLT2) - available for pin grabber and S-Style couplers

THUMBS

HANG DOWN PROFILE



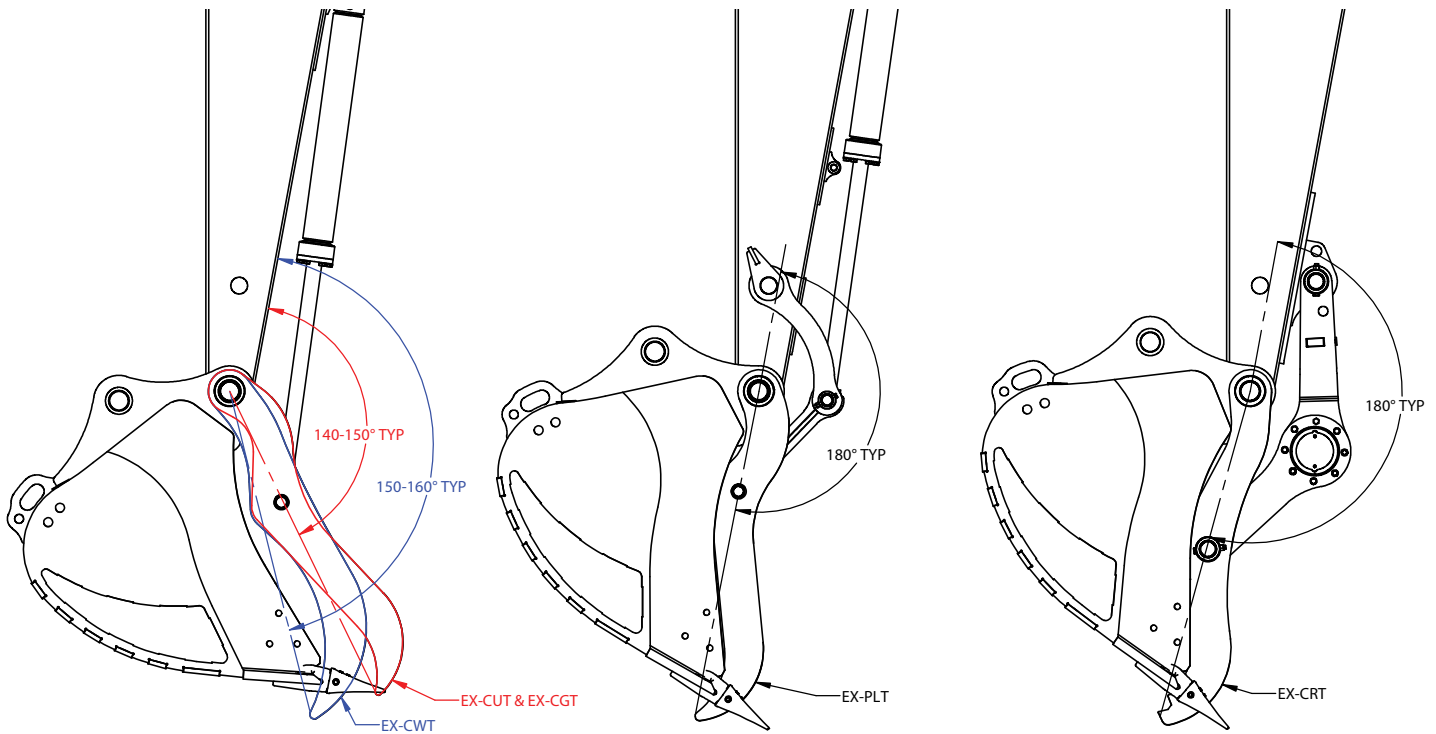
EXCAVATOR

THUMB APPLICATION GUIDE



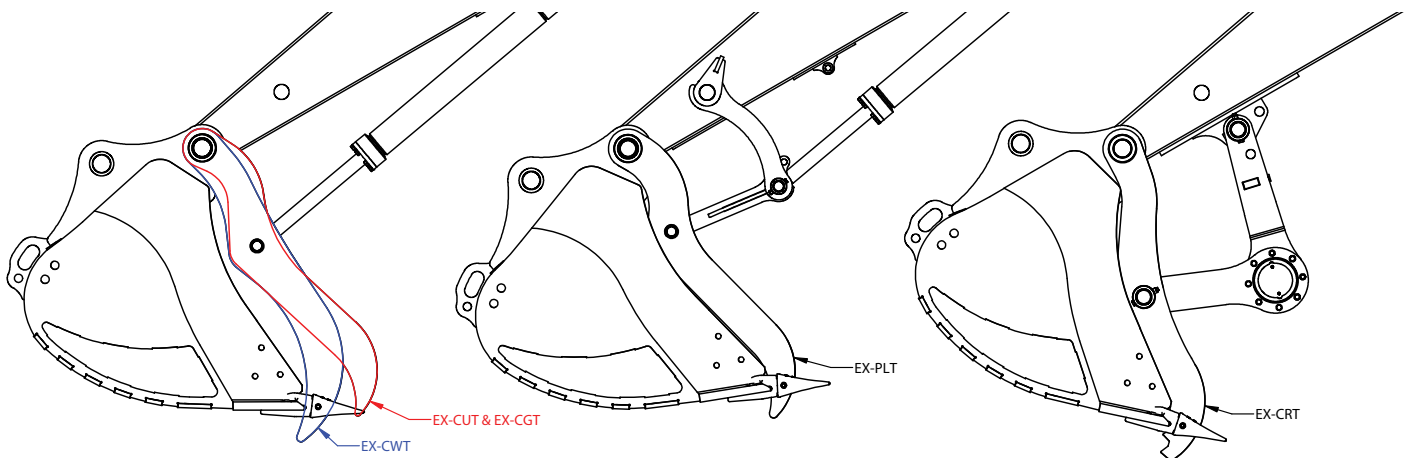
THUMBS

TYPICAL THUMB ROTATION



THUMBS

POSITION OF GREATEST THUMB HOLDING STRENGTH



- Thumb strength is two to three times greater in this position than in fully extended position
- Progressive link thumbs maintains grabbing force over a wider range of motion when compared to a standard direct link thumb
- The grabbing - or driving - force of a rotating style thumb is on par with the conventional thumb. However, the holding force is superior to conventional thumbs due to the hydraulic locking of the actuator

HARTLAND OFFICE

96 McLean Avenue
Hartland, New Brunswick
E7P 2K5

Ph: (506) 375-4493

CAMBRIDGE OFFICE

315 Thompson Drive
Cambridge, Ontario
N1T 2B3

Ph: (519) 623-9500

BLACKFALDS OFFICE

88 27323 TWP Rd 394
Lacombe County, Alberta
T4M 0S1

Ph: (403) 356-0048

LAWRENCEBURG OFFICE

408 Commerce Way
Ethridge, Tennessee
38456

Ph: 1-800-867-1006



CRAIGTM
ENGINEERING. MANUFACTURING. SERVICE.

WWW.CRAIGATTACHMENTS.COM

CANADA: 1-800-565-5007 | USA: 1-800-867-1006