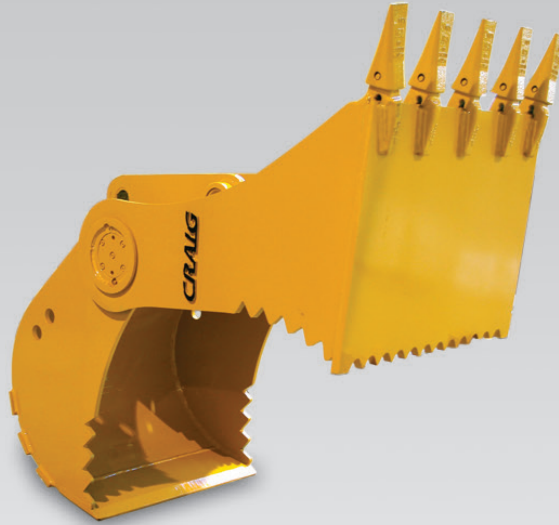


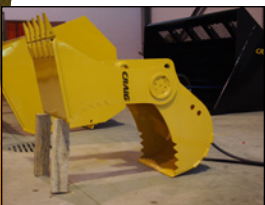
**EXB-CBB**

## 4-IN-1 BITE BUCKET



The 4-in-1 Bite Bucket is a versatile tool combining all the best aspects of a standard dig bucket, clam grapple, ditch bucket and chuck blade. With this one attachment you can minimize the need for additional machines on the job site. Dig like a standard bucket, move materials securely, grade the finished piece with the straight cutting edge, skim ground cover with the serrated reverse clam edge or securely grab a piece of I-beam to smooth large areas all at once. This bucket is also great for accurately spreading aggregate into trenches by using the bucket as a belly dump.

- Superior Brinell 400 steel is used in all wear areas
- Available in Wedge Lock, S Series or Manual Bar Lock lugging
- Various ground engaging tools available to meet your specifications
- Pin-on hook-ups are align bored to OEM tolerances



**Hartland Office**  
 96 McLean Avenue  
 Hartland, NB  
 E7P 2K5 Canada

Ph: (506) 375-4493

**Cambridge Office**  
 315 Thompson Drive  
 Cambridge, ON  
 N1T 2B3 Canada

Ph: (519) 623-9500

**Blackfalds Office**  
 88 27323 TWP Rd. 394  
 Lacombe County, AB  
 T4M 0S1 Canada

Ph: (403) 356-0048

**Lawrenceburg Office**  
 408 Commerce Way  
 Ethridge, TN  
 38456 USA

Ph: 1 (800) 867-1006

