

CMP

CRAIG MULTI-PURPOSE BUCKET

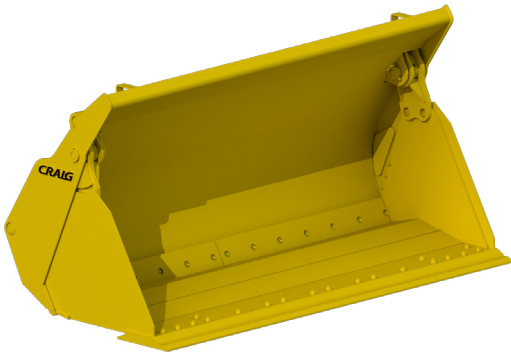


CRAIG™

CMP

CRAIG MULTI-PURPOSE BUCKET

FEATURES AND BENEFITS



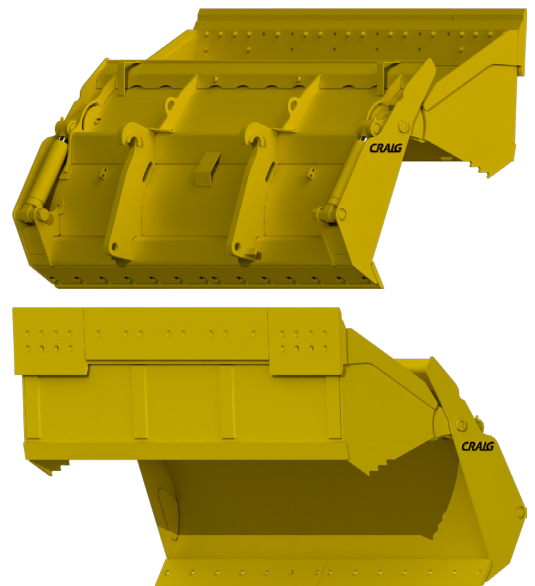
Multiply the productivity of your wheel loader with a Craig Multi-Purpose Bucket. Use it as a conventional bucket, dozer blade, front shovel, backfill scraper, clam grapple, or add pallet forks for material handling. Dual cylinders and a heavy duty boxed frame construction ensure that it's up for any task.

MILITARY PROVEN DESIGN

With a design that's been proven worldwide in military applications, the Craig Multi-Purpose Bucket is one of the best 5-in-1 loader buckets on the market. Made in Canada from high quality steel, this bucket will transform your loader into an efficient multi-tool on any job site.

5-IN-1 FUNCTIONALITY

5 buckets in 1, the Craig Multi-Purpose Bucket can be used as a conventional loader bucket, a dozer blade, a front shovel style bucket for increased dump height, a backfill scraper blade, and a clam style grapple for handling large objects such as tree stumps. A hanging tine kit can also be added to the Craig Multi-Purpose Bucket to further increase its versatility.



REBUILDABLE COMPONENTS

All cylinder pins and pivot points ship complete with bushings and are greasable to reduce wear. This reduces rebuild costs and improves the longevity of the bucket.





LEVEL INDICATORS

Running your bucket level allows it to wear properly when pushing it along the ground as it engages the wear components completely. Two bent pieces of steel are added to the back of the Craig Multi-Purpose Bucket so you always know what angle you are running your bucket at no matter what configuration it is in.

CUSTOM SPILL GUARDS

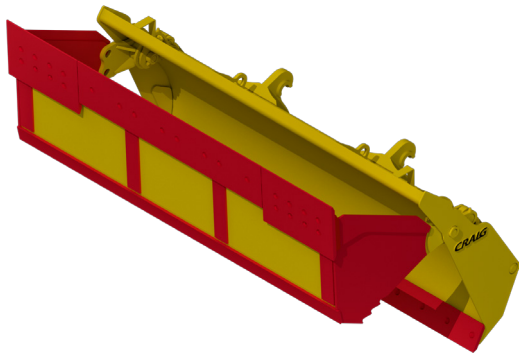
The Craig Multi-Purpose Bucket can be customized with higher spill guards for waste transfer and garbage applications upon request. A strong box spill guard comes standard on the Craig Multi-Purpose Bucket.

CYLINDER DESIGN

Underneath the hydraulic cylinders is left open to prevent material from packing around the cylinders and lessen the risk of cylinder damage. All cylinders are individually pressure tested to 5,000 PSI.



Level indicators are on both the right and left corners of the bucket.



AR 400 wear plate featured throughout the clam grapple and in the grapple and blade replaceable bolt-on edges.

WEAR PLATE

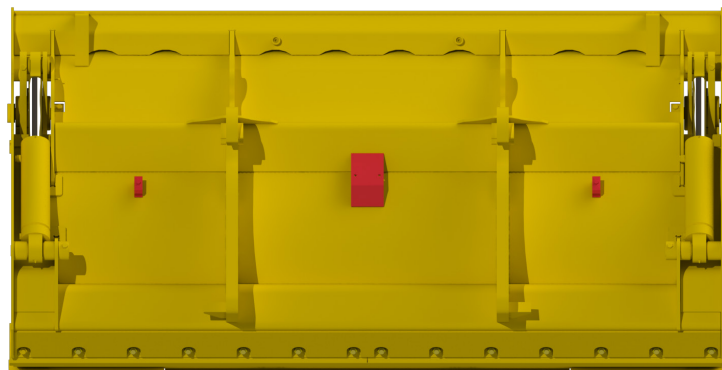
Clam grapple bottom wear runners, base edge, end plates, and side cutters are made of AR 400 wear plate to protect the bucket from wear and increase the overall life of the bucket.

REPLACEABLE BOLT-ON EDGES

Each bucket drilled to work with the OEM brand of cutting edges specified comes complete with cutting edges installed. Replaceable dozer blade edge also included for added protection when using the bucket as a dozer blade or backfill scraper.

EASY INSTALL

Efficient hydraulic hose routings that run to the center of the bucket make hooking up to your loader easy. Your loader will require the optional third valve to operate this attachment.



Hoses are routed into a centrally located hydraulic valve.



HARTLAND OFFICE

96 McLean Avenue
Hartland, New Brunswick
E7P 2K5 Canada

Ph: (506) 375-4493



CAMBRIDGE OFFICE

315 Thompson Drive
Cambridge, Ontario
N1T 2B3 Canada

Ph: (519) 623-9500



BLACKFALDS OFFICE

88 27323 TWP Rd 394
Lacombe County, Alberta
T4M 0S1 Canada

Ph: (403) 356-0048



LAWRENCEBURG OFFICE

408 Commerce Way
Ethridge, Tennessee
38456 USA

Ph: 1-800-867-1006



1-800-565-5007 • WWW.CRAIGATTACHMENTS.COM