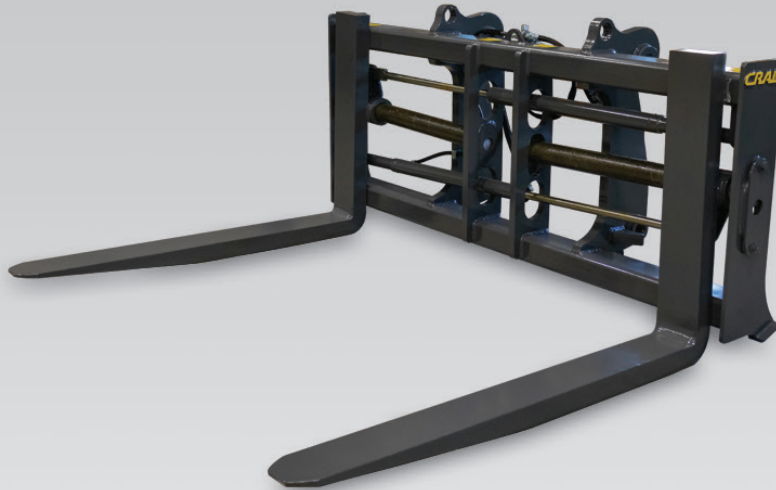


WL-HAFFT HYDRAULIC ADJUSTABLE PALLET FORKS



Change tine spacing on-the-fly from inside the cab with the Craig Hydraulic Adjustable Pallet Forks. This hanging tine design features two synchronous cylinders to ensure smooth operation. Fork tines allow up to 4" of vertical travel for picking up loads on uneven ground.

- Available in various fork lengths and thicknesses
- Floating tines come standard
- Available in Craig Quik Key, OEM coupler and Pin-on configurations
- Optional third valve required on machine
- 72" and 96" wide back frames available as standard

AVAILABLE TINES AND CAPACITIES BY MACHINE SIZE

2.00yd - 2.50yd	2.75yd - 3.00yd	3.00yd - 3.50yd	4.00yd - 4.75yd	5.00yd - 5.50yd	6.00yd - 8.00yd
2-1/4" x 5" x 48" (15,200lbs)	2-1/4" x 5" x 48" (15,200lbs)	2-1/4" x 5" x 48" (15,200lbs)	2-1/2" x 6" x 48" (21,400lbs)	3" x 6" x 48" (28,400lbs)*	3-1/2" x 8" x 60" (43,600lbs)*
2-1/4" x 5" x 54" (13,500lbs)	2-1/4" x 5" x 54" (13,500lbs)	2-1/2" x 6" x 54" (19,000lbs)	2-3/4" x 6" x 54" (22,000lbs)	3" x 7" x 60" (27,300lbs)*	3-1/2" x 8" x 72" (36,400lbs)*
2-1/4" x 5" x 60" (12,000lbs)	2-1/4" x 5" x 60" (12,000lbs)	2-1/2" x 6" x 60" (17,000lbs)	3" x 6" x 60" (22,800lbs)	3" x 8" x 72" (25,200lbs)*	3-1/2" x 8" x 96" (27,200lbs)*
2-1/4" x 5" x 72" (10,000lbs)	2-1/2" x 6" x 72" (14,200lbs)	2-3/4" x 6" x 72" (16,400lbs)	3" x 6" x 72" (19,000lbs)	3-1/2" x 8" x 96" (27,200lbs)*	
		3" x 6" x 96" (14,200lbs)*	3" x 6" x 96" (14,200lbs)*		

* ONLY AVAILABLE WITH A 96" WIDE BACK FRAME

Hartland Office

96 McLean Avenue
Hartland, NB
E7P 2K5 Canada

Ph: (506) 375-4493

Cambridge Office

315 Thompson Drive
Cambridge, ON
N1T 2B3 Canada

Ph: (519) 623-9500

Blackfalds Office

88 27323 TWP Rd 394
Lacombe County, AB
T4M 0S1 Canada

Ph: (403) 356-0048

Lawrenceburg Office

408 Commerce Way
Ethridge, TN
38456 USA

Ph: 1 (800) 867-1006



1-800-565-5007 • WWW.CRAIGATTACHMENTS.COM