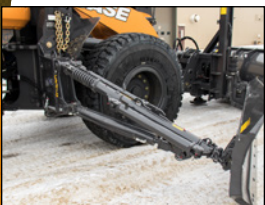


## WL-301-PW SERIES CRAIG PATROL WING



The Craig Patrol Wing uses the same components as our standard Wing Assembly for wheel loaders. Operates using two OEM auxiliary valve sections. Features up to 21" of mechanical extension as well as mechanical float on both ends of the moldboard.

- 30" level benching height (up to 48" available)
- Push pole mechanically extends 21" for increased reach
- Superior operator visibility
- Plow harness accepts all Craig snow plow models
- Replaceable, reversible cutting edge for long wear life
- Uses OEM factory supplied hydraulics - no wing hydraulic kit required
- Wing moldboard features mechanical float on both ends
- Requires the loader to have 2 auxiliary valve sections to operate both the wing and plow

### Hartland Office

96 McLean Avenue  
Hartland, NB  
E7P 2K5 Canada

Ph: (506) 375-4493

### Cambridge Office

315 Thompson Drive  
Cambridge, ON  
N1T 2B3 Canada

Ph: (519) 623-9500

### Blackfalds Office

88 27323 TWP Rd. 394  
Lacombe County, AB  
T4M 0S1 Canada

Ph: (403) 356-0048

### Lawrenceburg Office

408 Commerce Way  
Ethridge, TN  
38456 USA

Ph: 1 (800) 867-1006

