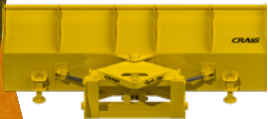
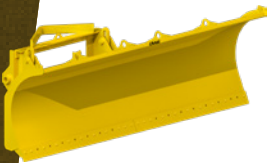
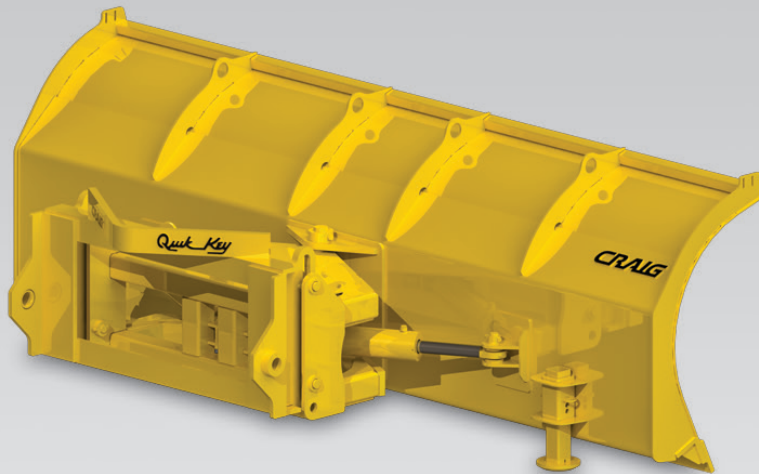


**WL-REV-HS**

## HIGH SIERRA REVERSIBLE PLOW



A rugged snow removal solution for your wheel loader, the Craig High Sierra Reversible Plow is designed with heavy duty snow removal applications in mind. Features a rugged boxed back frame and additional gusseting along the base angle for improved strength in tough plowing conditions.

- Universal vertical down pressure float hook-up frame - can be locked out for scraping applications
- Adjustable, replaceable skid shoes
- Up to 30° of left and right angling capability
- Rugged 4" cylinders with a wide stance for greater holding strength
- Available in Craig Quik key, OEM coupler, and pin-on configurations
- 45" tall moldboard with 1/4" thick moldboard sheet
- Tall steel cutting edges for longer wear life
- Rigid design with no trip
- Optional rubber deflector, high visibility kit, and curb shoes available
- Optional third valve required on machine

**Hartland Office**

96 McLean Avenue  
Hartland, NB  
E7P 2K5 Canada

Ph: (506) 375-4493

**Cambridge Office**

315 Thompson Drive  
Cambridge, ON  
N1T 2B3 Canada

Ph: (519) 623-9500

**Blackfalds Office**

88 27323 TWP Rd 394  
Lacombe County, AB  
T4M 0S1 Canada

Ph: (403) 356-0048

**Lawrenceburg Office**

408 Commerce Way  
Elthridge, TN  
38456 USA

Ph: 1 (800) 867-1006

