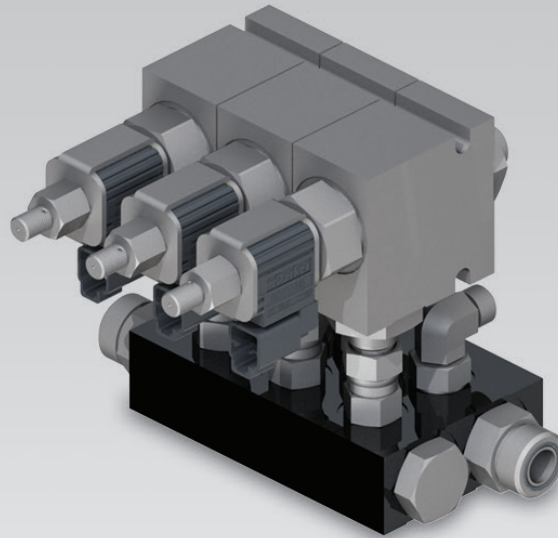


WL-SPD SERIES VALVE SNOW PLOW DIVERTER VALVE



The Snow Plow Diverter Valve greatly simplifies attachment installation by taking any standard loader auxiliary function, and splitting it into multiple functions at the push of a button. Plows that typically require 3 separate valve sections can run on machines with only one available circuit. This makes hydraulic install as simple as connecting 2 lines from the attachment's pre-installed valve to the machine's auxiliary circuit, and running a wiring harness to the cab. No machine pressure or flow changes required.

- No auxiliary setting changes required, the valve is capable of 75 GPM and 5,000 PSI
- No valve installation required, the diverter valve and hosing comes pre-installed on snow plows requiring multiple hydraulic functions ¹
- No complicated hard-wiring, the wiring harness plugs directly into the valve and then runs to the control options provided - simply mount the controls in the cab and plug them in
- Joystick or rocker switch controls available ². Joystick attaches directly to the top of most auxiliary handles, switch option fits a standard blank slot
- For use in snow plow applications only

1. Jumper lines to auxiliary not included

2. Patrol Wing emergency up capability requires an additional switch

Hartland Office
 96 McLean Avenue
 Hartland, NB
 E7P 2K5 Canada

Ph: (506) 375-4493

Cambridge Office
 315 Thompson Drive
 Cambridge, ON
 N1T 2B3 Canada

Ph: (519) 623-9500

Blackfalds Office
 88 27323 TWP Rd 394
 Lacombe County, AB
 T4M 0S1 Canada

Ph: (403) 356-0048

Lawrenceburg Office
 408 Commerce Way
 Ethridge, TN
 38456 USA

Ph: 1 (800) 867-1006

